

New approach to preventive maintenance

Genie has designed a new consolidated maintenance protocol that enables customers to complete the entire program for all Genie S- and Z- boom lift models in less time, according to Mitch Ely, National Operations Manager, Terex AWP.

With this new approach, maintenance procedures are reduced, or even eliminated, to save time and labour costs. With high utilisation of rentals fleets across Australia the maintenance protocol for Genie boom lifts provides the flexibility rental companies need to keep their equipment on rent longer while making routine tasks a priority.

"We realise our customers have limited time to take care of maintenance tasks between rentals," Mitch said.

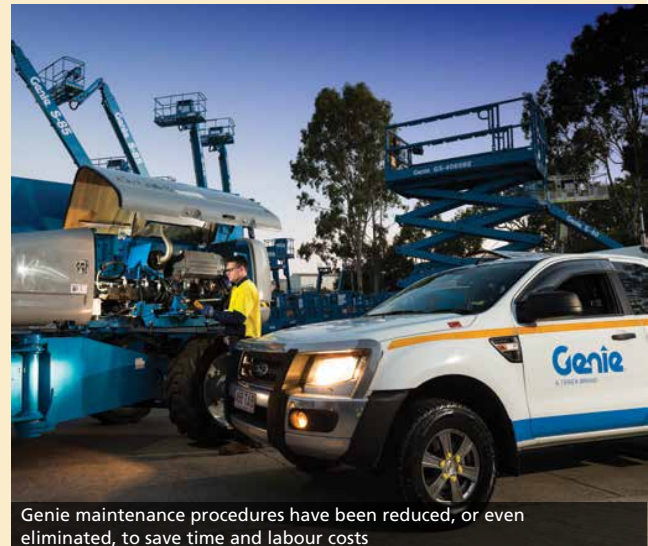
"To make completing routine tasks more manageable, Genie has designed a new approach to maintenance that condenses procedures into one manual for the entire boom family and has extended service intervals, so the whole process is easier and takes less time to complete.

"Previously, Genie offered 24 separate manuals to help customers maintain their boom lift equipment. With the new maintenance protocol, all of this information is condensed into one, easy-to-use manual. The one-stop maintenance manual contains complete performance specifications and a streamlined list of maintenance tasks to ensure every Genie boom lift spends less time in the shop and more time out on rent," Mitch said.

"Genie provides this one-stop maintenance manual in hard copy or digital format for easy integration into custom electronic systems. In addition, the new protocol includes extended service intervals recommendations. Many periodic procedures for example, have moved from quarterly and semi-annually to annually. Commissioning has changed too. Rather than performing some of the tasks at the 30-hour mark and some at 50 hours or longer, now all of the commissioning assignments are set for 50 hours and 150 hours.

"Our new protocol will reduce boom maintenance by 10 hours annually and up to a 25% reduction in service resources per boom," Mitch said.

The new Genie protocol also standardises



Genie maintenance procedures have been reduced, or even eliminated, to save time and labour costs

maintenance processes across the entire Genie boom family product line.

Download the new manual at Genie: www.genielift.com or: www.terex.com

Australian Standard 1418.10 update

The Elevating Work Platform Committee met in October last year to continue working on AS 1418.10. Progress is being made and the EWPA will keep members up to date when time frames are locked in. The EWPA offers its thanks to the EWPA members involved for their work with Standards Australia and commitment to revising this Standard.

TAKE SAFETY TO THE NEXT LEVEL!

SAFE MAN SYSTEM

Crush injuries, falls and fatalities on elevated work platforms remain a major safety concern for Australia's construction industry.

Manitou's new SafeManSystem electronic control technology offers a superior level of operator protection, designed to shut down an elevated work platform when operator safety is compromised. Functions deactivate, beacon lights flash and an audible warning is emitted until the platform is manually reset.

SafeManSystem will minimise the risk of serious injuries for operators and give owners maximum safety and peace of mind.

Available now as an option or kit on all Manitou elevated work platforms.

New
MAN'GO 12
Now available at
Liftrite Hire & Sales



DISCOVER THE FULL RANGE OF MANITOU EWPs NOW AT WWW.LIFTRITE.COM.AU

CALL YOUR WA AUTHORISED MANITOU DEALER NOW!

Liftrite
HIRE & SALES

Giving your business a lift!

T: 08 9455 2077
www.liftrite.com.au

219 BANNISTER RD,
CANNING VALE WA 6155

