

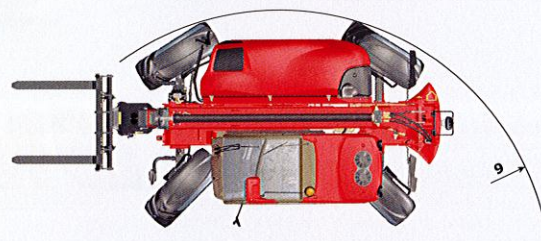
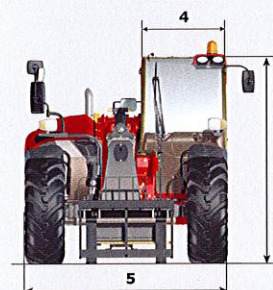
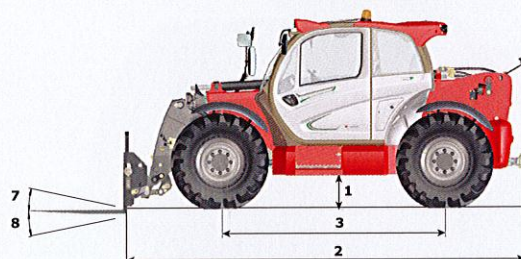
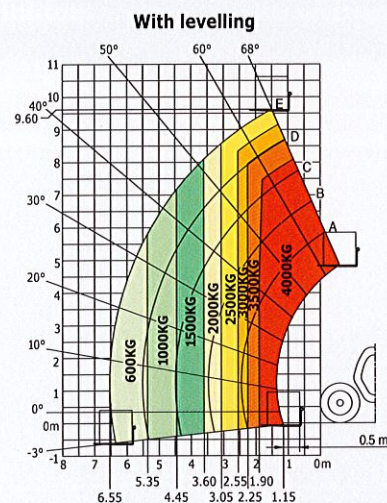
MLT 1040 137 PS

Lifting	
Max. capacity	4000 kg
Max. lifting height	9.6 m
Max. outreach	6.55 m
Reach at max. height	1.5 m
Break-out force with bucket	5500 daN
Unladen time	
Lifting	8.34 secs
Lowering	5.36 secs
Extension	11.3 secs
Retraction	9 secs
Crowd	3.8 secs
Dump	2.6 secs
Tyres	460/70-24
Service Brake	hydraulic oil immersed multi-disc braking on front/rear axles
Engine	JOHN DEERE Stage III B
Type	4045 PWX
Cubic capacity	4 cylinders - 4500 cm ³
Power	137 HP - 102 kW
Max. torque	534 Nm - 1500 rpm
Injection	direct
Cooling	water
Laden drawbar pull	9300 daN
Transmission	torque converter
Gearbox	Powershift M-Shift - Lock-up
Reversing shift	electrohydraulic control
Number of gears (forward/reverse)	5/3
Max. travel speed (may vary according to applicable regulations)	40 kph
Hydraulics	180 l/min - 290 bar
Pump	swashplate piston pump
Control valve	electronically controlled variable cubic capacity DDIC
Capacities	
Hydraulic oil	195 l
Fuel	143 l
Unladen weight (with forks)	9175 kg
Dimensions	
1. Ground clearance	0.41 m
2. Overall length to carriage	5.17 m
3. Wheelbase	2.88 m
4. Overall width of cab	0.995 m
5. Overall width	2.39 m
6. Overall height	2.40 m
7. Crowd angle	12°
8. Dump angle	135°
9. Turning radius (over tyres)	3.74 m
Standard forks (length x width x thickness)	1200 x 125 x 50 mm
Noise and vibration	
Noise at driving position (LpA)	80 dB
Environmental noise (LwA)	105 dB
Vibration to whole hand/arm	<2.5 m/s ²

Rough terrain load chart

standard EN1459 B

Machine on tyres with forks



MLT 1040 137 PS

Lifting

Max. capacity	4000 kg
Max. lifting height	9.6 m
Max. outreach	6.55 m
Reach at max. height	1.5 m
Break-out force with bucket	5500 daN

Unladen time

Lifting	8.34 secs
Lowering	5.36 secs
Extension	11.3 secs
Retraction	9 secs
Crowd	3.8 secs
Dump	2.6 secs

Tyres

460/70-24

Service Brake

hydraulic oil immersed multi-disc braking on front/rear axles

Engine

JOHN DEERE Stage III B

Type

4045 PWX

Cubic capacity

4 cylinders - 4500 cm³

Power

137 HP - 102 kW

Max. torque

534 Nm - 1500 rpm

Injection

direct

Cooling

water

Laden drawbar pull

9300 daN

Transmission

torque converter

Gearbox

Powershift M-Shift - Lock-up

Reversing shift

electrohydraulic control

Number of gears (forward/reverse)

5/3

Max. travel speed

40 kph

(may vary according to applicable regulations)

Hydraulics

180 l/min - 290 bar

Pump

swashplate piston pump
electronically controlled variable cubic capacity

Control valve

DDIC

Capacities

Hydraulic oil

195 l

Fuel

143 l

Unladen weight (with forks)

9175 kg

Dimensions

1. Ground clearance	0.41 m
2. Overall length to carriage	5.17 m
3. Wheelbase	2.88 m
4. Overall width of cab	0.995 m
5. Overall width	2.39 m
6. Overall height	2.40 m
7. Crowd angle	12°
8. Dump angle	135°
9. Turning radius (over tyres)	3.74 m
Standard forks (length x width x thickness)	1200 x 125 x 50 mm

Noise and vibration

Noise at driving position (LpA)	80 dB
Environmental noise (LwA)	105 dB
Vibration to whole hand/arm	<2.5 m/s ²

Rough terrain load chart

standard EN1459 B

Machine on tyres with forks

With levelling

