

MINING
Solutions



Handling your world

Founded over 60 years ago by the Braud family, the Manitou Group now operates worldwide. A world-leader in all-terrain material handling, the Group designs, manufactures, distributes and services equipment for construction, agriculture and industries.

The Group's product ranges include: all-terrain fixed, rotating and heavy-load telehandlers; all-terrain, semi-industrial and industrial masted forklift trucks; wheel or track skid-steer loaders; access platforms; truck-mounted forklifts; warehousing equipment; and attachments.

Through its iconic brands – Manitou, Gehl and Mustang by Manitou – and its worldwide network of 1,500 dealers, the Group offers the best solutions to create optimum value for its customers.

Headquartered in France, the Group registered a revenue in 2018 of 1.9 billion euros in 140 countries and employs 4,400 people, all strongly focused on satisfying customers.



1958

First Manitou forklift truck created based on an idea from Marcel Braud.

1972

Group's global expansion began.

Sales & marketing partnership agreement signed with Toyota for the exclusive distribution of Toyota industrial forklifts in France.

1981

Manitou's first telehandler launched.

1984

The company went public.

1993

First MRT rotating telescopic forklifts were launched.

1995

Aerial workplatforms launched.

1996

Manitou was ISO-9001-certified for the first time.

1998

Marcel Braud appointed Chairman of the Supervisory Board..

2007

Manitou inaugurated a 22,000 m² international logistics center.



3 brands
distributed by
1,500 dealers
in 140 countries

MANITOU

GEHL

MUSTANG
by **MANITOU**

- 27 companies
- 11 production facilities
- 4,400 employees worldwide
- 64% of the share capital held by the founding families
- 80% of revenue comes from foreign markets
- 1.9 billion euros of turnover in 2018

2008

The American Gehl Company was acquired.

2009

Governance changed and the company went back to having a Board of directors.

2010

Gehl and Mustang articulated loaders launched.

2012

Crossover agreement signed with the company Yanmar for the manufacturing and distribution of compact excavators.

2013

Partnership with Yanmar made stronger with Yanmar taking a 6,26%-stake in the Group's capital.

2014

January: Michel Denis appointed as President and CEO.
April: new roadmap hinged in the three divisions, including one for service.

2015

Celebration of the 500,000th machine sold in the world.

500 000

2016

Launch of the new MLT range, NewAg.

NewAg
SHARE THE VISION

2017

Inauguration of the new entity Manitou Equipment India, specialised in compact loaders and backhoes.





Long-term partner for a demanding world

For over 20 years, we have understood the industrial safety, productivity and service issues that you have to deal with in mining; from the construction of the mine to operation support and infrastructure / equipment maintenance.

Manitou decided to create a dedicated team that designs and produces mining utility vehicles: a direct response to users' need for a safe, robust handling & personnel lifting solution. These products integrate a series of Factory re-designed features to suit Mining specific harsh environments and applications.

Our network of 1,500 expert dealers provides you with services essential to your business, including after-sales support, maintenance, training and financing.

With capacities from 0,5 to 23 tons (t) and lift heights from 6 to 40 meters (m), Manitou Group has the solution to all your material handling needs.





SUMMARY

Manitou mining solutions	8
Manitou mining & attachment ranges	16
The model that's right for you	26
Manitou is here to help	34



Do you want to build in the best conditions?

To improve your return on investment,
you constantly need to build your
infrastructures in shorter times and
often in harsh mining environments.
With precise handling and positioning
of heavy, bulky loads, preparing the soil,
you make no compromise with safety.





Safety

- Advanced equipment (standard or optional): safety stability devices, ROPS / FOPS cabins, on-board weighing, rearview and pedestrian detection cameras, attachment recognition and more
- Panoramic 360° vision and ergonomic cab comfort
- Customized machine operation and attachment training
- Fail-safe braking and emergency steering

Performance

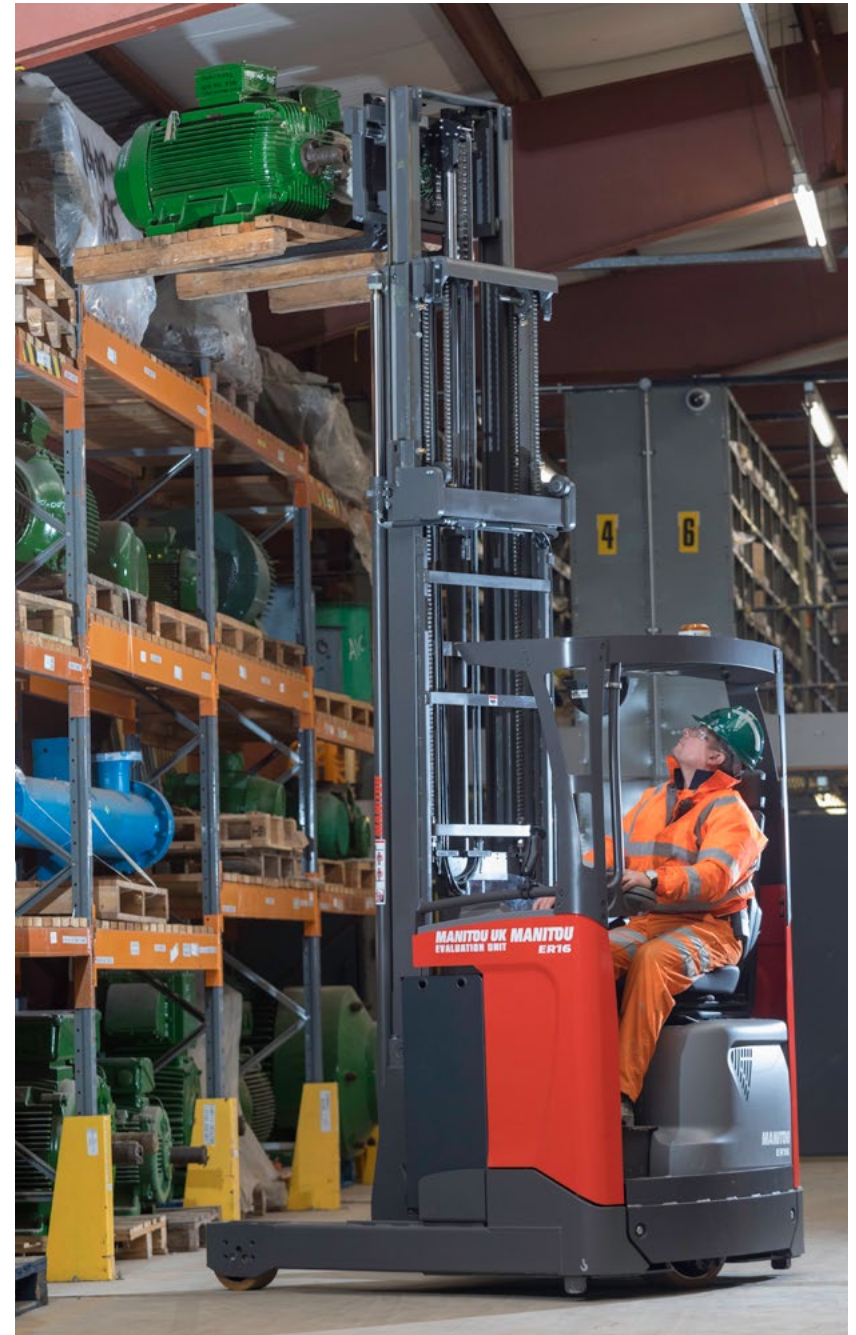
- Movement speed and fast cycle times for a quick return on your investment or rental
- Precision execution made possible with hydrostatic machines, proportional controls and remote control
- Dedicated attachments such as forks, buckets, jibs, winches etc.

Select from our solutions, the machines and accessories that best suit your needs from Manitou group: all-terrain masted forklift 3 to 7 t, rotating telescopic forklifts (lifting height up to 31.5 m), backhoes and more.



Responding to the needs of your team is essential.

Loading and unloading, placing and removal of material safely, storing goods (crusher spare parts, cylinders or tyres), stacking and placing in warehouses are the most important operations to support mining activities.





A global material handling offer

- From the manual and electrical pallet trucks to the mast forklift through to the truck mounted forklift and the order picker
- High manoeuvrability & stability
- Semi-industrial forklifts: perfectly adapted to both indoor and outdoor operations with an excellent rough terrain capability.



Simple for daily handling

Designed for any type of ground, easy to maintain, easy to use, ergonomic.

If you want more versatility, select from these quick change attachments: forks, jib with hook, drum handler...

Want to optimize your infrastructure and fleet maintenance?

Essential for the productivity of your operations; the inspection and maintenance of your sites is a priority. The regular replacement of wheels, cylinders, engines, hydraulic pumps or track rollers through to the daily maintenance of buildings, you need multitasking equipment that can be used in all situations.

SURFACE
MINING





Safety

- Fail-safe braking system
- Emergency steering
- External emergency stop
- Protection of critical components (engine, steering, transmission and hydraulics)
- Guardian angel mining system (continuous monitoring of machine parameters)



Cost efficiency

- Perform your equipment maintenance in site
- Diversify your return on investments through multiple attachment solutions
- Optimize production equipment uptime
- Improves your maintenance fleet management by decreasing the number of machines
- Enhances maintenance schedule flexibility

The Manitou Group range of machines and accessories meets your specific maintenance needs: heavy load telehandlers from 9 to 23 t, attachments: tyre and cylinder handlers, cable reel handlers, jibs and winch access platforms for safe handling...

MINING UNDERGROUND

Looking for efficient solutions your infrastructure maintenance?

«You use your material handling tools on a daily basis for your site operations: delivering consumables, drill rods, roof bolts, drilling and grouting operations, installing hanging ventilation fans and ducts... and most of the time in wet and dusty conditions.»

This is why you want to rely on your handling equipment and avoid downtime in your operations.

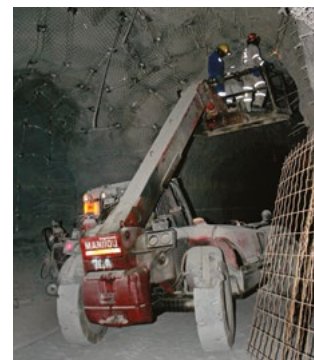




Productivity

- Diversify your return on investments through multiple attachment solutions
- Identical and easy maintenance whatever the model range: engine access, diagnostic systems...
- Quick and easy attachment changes.

Manitou Group offers a wide range of machines that meet the challenges of the daily operations of your site: from the all-purpose masted forklift and skid loader to the compact telehandler.



Safety

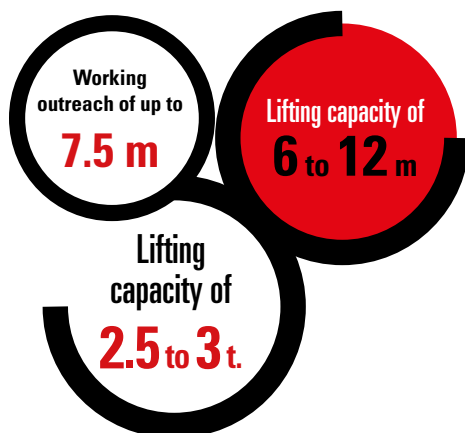
- Personnel cabin window guards
- Fail-safe braking system
- Emergency steering
- Led working lights
- SMART lights safety system
- Exhaust fumes purification & dilution system
- Flameproof (depending on the countries homologation requirements)

What is a Manitou MT-X Mining?

The Manitou Mining MT-X telehandlers are manufactured in our production facilities in France and in Italy. They are fitted with dedicated mining equipments and facilitate your jobs in every kind of application inside the mine.

	Standard MT-X	Mining MT-X
Std Specs factory built	S	S
Mining specs factory built	-	S
Fail-Safe Braking & Steering system	-	S
Control system and warnings	-	S
Electrical protection	-	S
General protection	-	S
Ergonomics, access, visibility	-	S
Fire prevention & control	-	S
Loose wheel nut indicators	-	S
And many other Mining specs options	-	S

S: serie / -: not available



General protection

- guards (cabine, windows, lights)
- exhaust fumes purifier and diluter system
- hydraulic hose sleeve burst protection
- emergency stop bumpers



Ergonomics, access, visibility

- 360° camera system
- LED lights
- SMART lights safety system
- warnings, danger, visibility decals
- reflective stripes



Fail-safe braking & steering

- mining fail safe-braking system
- daily brake test system
- emergency steering



Mining tyres

- loose wheel nut indicators





Lifting people

The MT-X range offers predisposition to equip your telehandler with a remote controlled work platform



Fire prevention & control

- fire suppression system & fire extinguishers
- turbo, exhaust line/muffler insulation & guards
- engine compartment fire prevention system



Electrical protection

- fuse board protection system
- resettable fuses (except MT-625)
- wiring protection system
- battery starter cut off



Control systems & Warnings

- guardian angel monitoring system
- oil pressure / engine coolant temp. monitoring
- load state monitoring system
- pre-start horn alarm
- external emergency stops

What is a Manitou MHT-X Mining?

The Manitou Mining MHT-X (Manitou Heavy Telescopic) telehandlers are manufactured in our production facilities in Italy. They are fitted with dedicated mining equipments.

Combining performance and versatility, your MHT-X will increase the productivity of all your mining sites.

	Standard MHT-X	Mining MHT-X
Std Specs factory built	S	S
Mining specs factory built	-	S
Fail-Safe Braking & Steering system	-	S
Control system and warnings	-	S
Electrical protection	-	S
General protection	-	S
Ergonomics, access, visibility	-	S
Fire prevention & control	-	S
Loose wheel nut indicators	-	S
And many other Mining specs options	-	S

S: serie / -: not available

Ergonomics, access, visibility

- 360° camera system
- LED lights
- SMART lights safety sytem
- warnings, danger, visibility decals
- reflective stripes



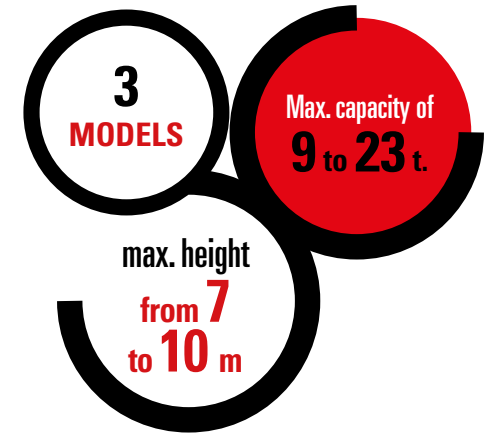
Fail-safe braking & steering

- mining fail safe-braking system
- daily brake test system
- emergency steering



Mining tyres

- loose wheel nut indicators





General protection

- guards
(cabine, windows, lights)
- exhaust fumes purifier and diluter system
- hydraulic hose sleeve burst protection
- emergency stop bumpers



Fire prevention & control

- fire suppression system & fire extinguishers
- turbo, exhaust line/muffler insulation & guards
- engine compartment fire prevention system



Control systems & Warnings

- guardian angel monitoring system
- oil pressure / engine coolant temp. monitoring
- load state monitoring system
- pre-start horn alarm
- external emergency stops



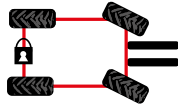
Electrical protection

- fuse board protection system
- resettable fuses
- wiring protection system
- battery starter cut off

An ultra-manageable machine with 3 steering modes

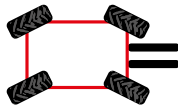
2 WHEEL STEER

to ensure greater safety on the road



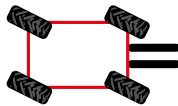
4 WHEEL STEER

to manoeuvre around confined sites



CRAB MODE

for tricky sideways approaches

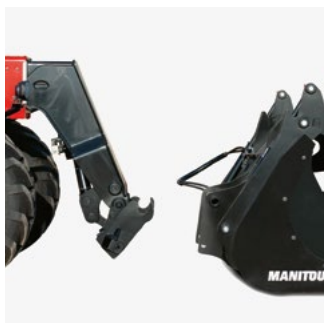


Frame levelling

No more worrying about ground conditions!

Standard on all of our MHT-Xs (excluding MHT-X 790), frame levelling lets you correct your machine's level to keep your load horizontal.





A simple and proven coupling system

Save money by investing in multi-functional equipment!

With an entity dedicated to attachments, and approving each machine-attachment pairing, Manitou offers you maximum versatility and profitability by transforming your telehandler into a real tool carrier.

With the Manitou hook-up system, which we have used on our telehandler models since 1981, you can easily change attachments in just a few seconds.







Ergonomics and visibility

The manitou telehandlers have a comfortable, easy-access driver's cab: wide, non-slip steps, wide door for easy access, electric window, main controls within easy reach, etc. Your personal belongings, documents, etc. All have their own place in the many large storage compartments provided in the cab.

- 1 **FNR (Forward Neutral Reverse) button**
- 2 **Hydraulic attachment line**
- 3 **Telescope: retraction and extension**
- 4 **Buttons + and - : gear changing**



Forward: boom lowers
Backward: boom lifts
Left: attachment crowd
Right: attachment dump



Simple and ergonomic controls

Manitou works hard to make your work easier! With the JSM (Joystick Switch and Move) you can operate all standard hydraulic functions with just one hand, meaning you can keep one hand on the steering wheel at all times for maximum safety.

Control the machine remotely, as if you were in the cab! The (optional) remote control allows excellent visibility of your load. This unit can also be used for operating the machine in man basket mode.



A complete range of tools adapted to industry and mining

Manitou telehandlers are truly adaptable tool carriers, as the specially designed attachments can easily be added depending on your needs. We have a range of Manitou-approved attachments that are fully compatible with our machines.

A quick and easy coupling system

In order to save you time, the coupling system for Manitou attachments (TS: simple fork carriage with manual or hydraulic locking) is reliable, quick and easy to use. Attach and detach attachments with ease.



Fork carriage - TFF

As standard on all of our MHT-Xs, this attachment allows handling of palletised loads, 20" containers, etc.



Hydraulic floating fork positioner

The distance between the forks can be adjusted hydraulically directly from the cab, for quick and easy adaptation to all pallet dimensions. Lateral movement is available as an option for increased efficiency.



Jib-hook - PC

A simple and effective tool for handling suspended loads, it maintains the nominal capacity of the MHT-Xs.



3-hook jib - P

3 offsets, 3 capacities, for maximum versatility when handling suspended loads.



Hydraulic winch

This winch lets you transform your MHT-X into a real crane on wheels, increasing profitability. Capacities available: 9,000 to 22,000 kg.



Re-handling bucket - CBR

Bucket designed for materials with a density of up to 2,000 kg/m³ maximum.



Tyre clamps - TH

These clamps are designed for handling and fitting tyres or wheels to all types of mining vehicles in complete safety.
Capacity: up to 12,000 kg.



Cylinder clamps - CH4

3 wires hold the cylinder for maximum precision and safety. Suitable for: rear struts, front struts, dumping cylinder, boom cylinders, accumulators, transmission shaft, tilting cylinders and steering cylinders.
Capacity: up to 4,000 kg.



Cylinder clamps - CH10

Hydraulic pressure secures the cylinder. Operating for cylinders from 230mm (9.05") to 640mm (25.2") OD.
Capacity: up to 10,000 kg.



Tube clamp - PH

This attachment is designed for handling tubes, both where they are stored and where they are used.
Can be used as a fork carriage for increased versatility.



Gallery platform

This platform is fitted with a FOPS-certified roof for optimal personal protection.
Capacity: 1,000 kg including 3 people and allowing the use of heavy tools in the platform.



Platform winch

The perfect tool for maintenance of industrial facilities, the platform and winch combination ensures safe elevation of personnel while allowing suspended loads to be lifted and handled directly from the platform without returning to the ground.
Up to 450 kg winch capacity including a maximum of 3 people.



Mining platform

This ultra-strong platform, which is perfect for mining operations and other demanding applications, can withstand impacts of 3,000 kg.
Capacity: 1,200 kg including 3 people.

Bespoke

Do you have specific needs or special applications? Thanks to the experience and skills of the Special Solutions department, Manitou is able to offer customised attachments and machines that comply with the most detailed specifications. Can we help with anything? Feel free to contact us!

Discover all
our attachments on
manitou.com

SELECT
YOUR MODEL

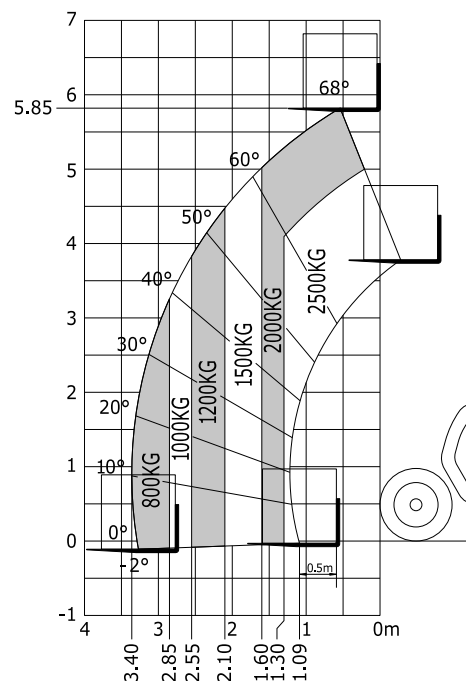


MT / MT-X 625 MINING

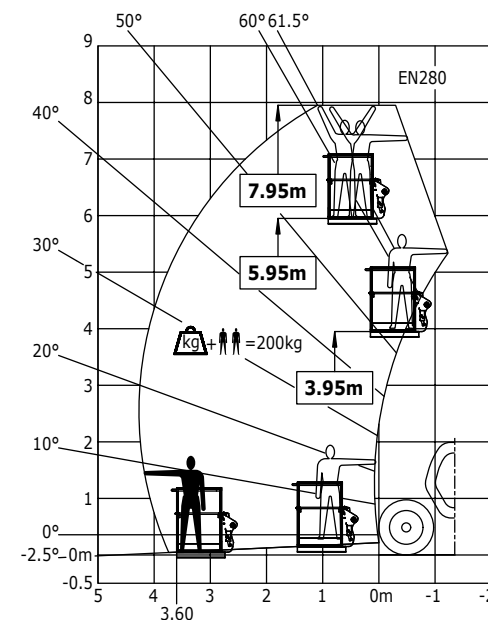


Transmission*	H/C*	HA
Power	Hp (kW)	75 (55.4)
Engine brand	-	Kubota
Max. capacity	kg	2 500
Max. lifting height	m	5.85
Max. outreach	m	3.40
Stabilizers		No
Overall length to carriage	m	3.89
Overall width	m	1.81
Overall height	m	1.92
Turning radius (over tyres)	m	3.31
Ground clearance	m	0.33
Unladen weight (with forks)	kg	4710
Max. travel speed (may vary according to applicable regulations)	km/h	25

Machine on tyres with forks
Stability norm ISO 22915-14



Machine on tyres
with 1.20 m / 200 kg platform

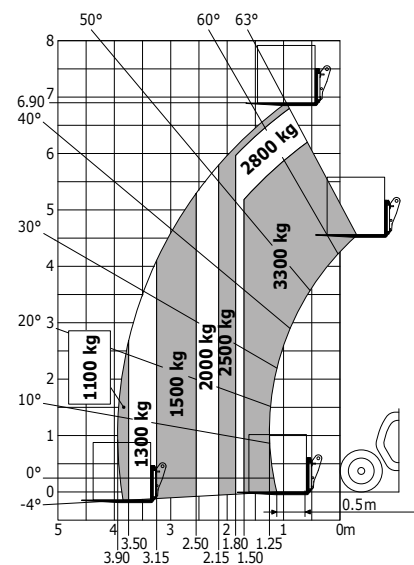


* HA : Hydrostatic
C : Torque converter

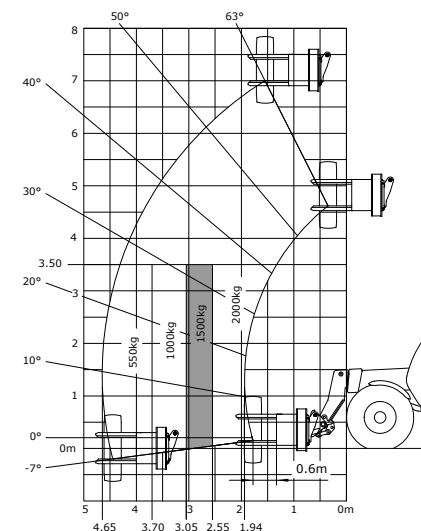


Transmission*	H/C*	C
Power	Hp (kW)	95 (70)
Motor brand	-	Perkins
Max. capacity	kg	3 200
Max. lifting height	m	6.90
Max. outreach	m	3.90
Stabilizers		No
Overall length to carriage	m	4.76
Overall width	m	2.26
Overall height	m	2.30
Turning radius (over tyres)	m	3.80
Ground clearance	m	0.45
Unladen weight (with forks)	kg	6620
Max. travel speed (may vary according to applicable regulations)	km/h	27

Machine on tyres with forks
Stability norm ISO 22915-14



Machine on tyres with TH33
Norm EN1459-B



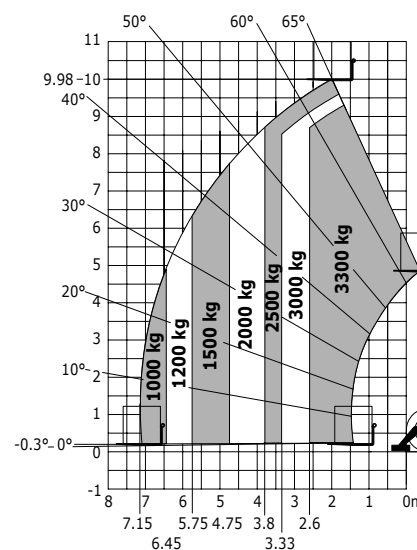
* H : Hydrostatic
C : Torque converter

MT-X 1033 S MINING

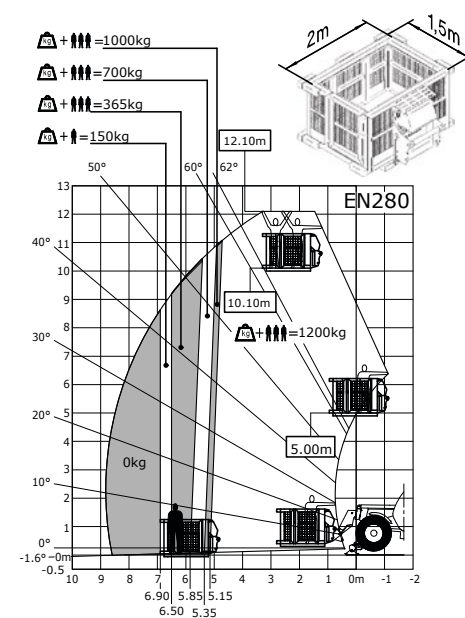


Transmission*	H/C*	C
Power	Hp (kW)	101 (74.5)
Engine brand	-	Perkins
Max. capacity	kg	3 200
Max. lifting height	m	9.98
Max. outreach	m	7.15
Stabilizers		yes
Overall length to carriage	m	4.93
Overall width	m	2.25
Overall height	m	2.30
Turning radius (over tyres)	m	3.80
Ground clearance	m	0.45
Unladen weight (with forks)	kg	7745
Max. travel speed (may vary according to applicable regulations)	km/h	27

Machine on stabilizers with forks
Stability norm ISO 22915-14



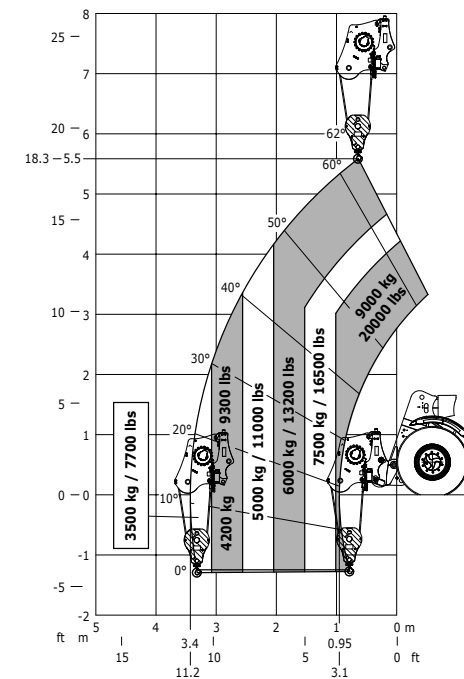
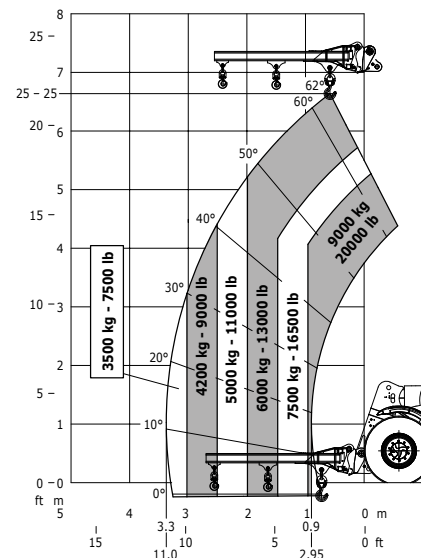
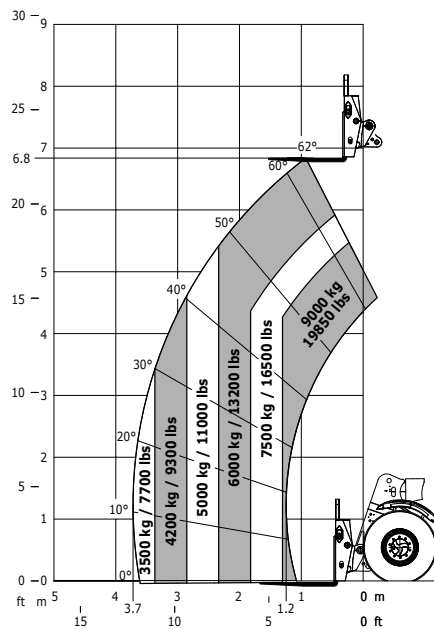
Machine with mining platform
Access version



MHT-X 790 MINING



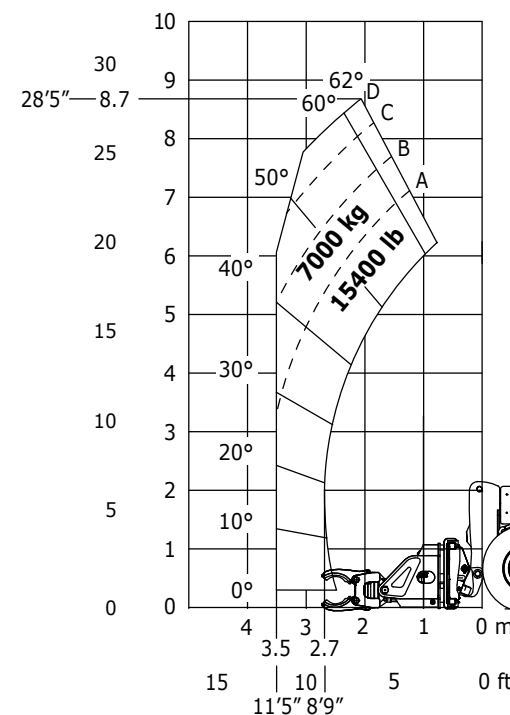
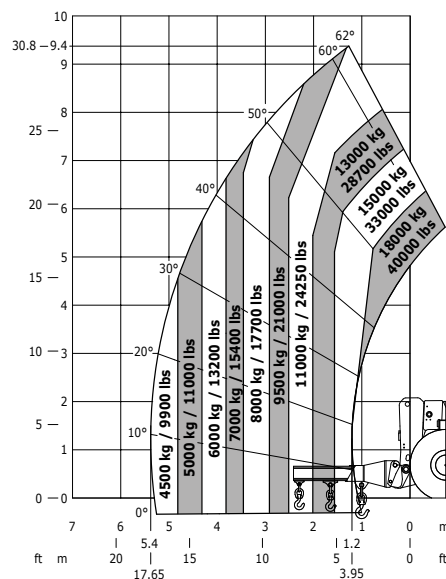
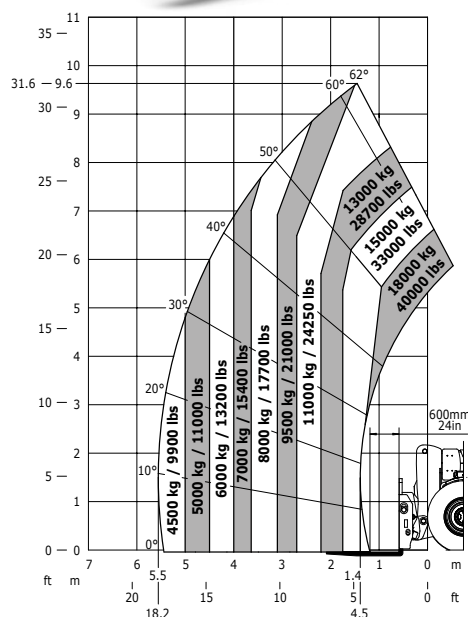
Transmission	-	Hydrostatic
Engine power	Hp (kW)	137 (102)
Engine brand	-	John Deere
Max. capacity	kg	9000
Max. lifting height	m	6.84
Max. offset	m	3.72
Dimensions without attachments (LxWxH)	m	5.27x2.47x2.48
Hydraulics	l/min - bar	180 / 270
Tare weight with fork hooks	kg	13160
Max. speed	km/h	30



MHT-X 10180 MINING



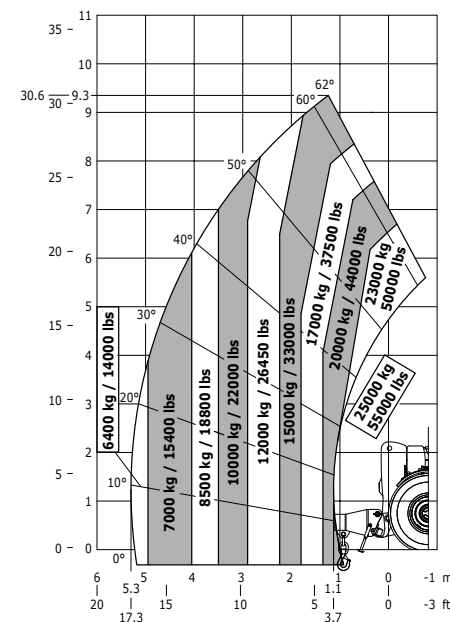
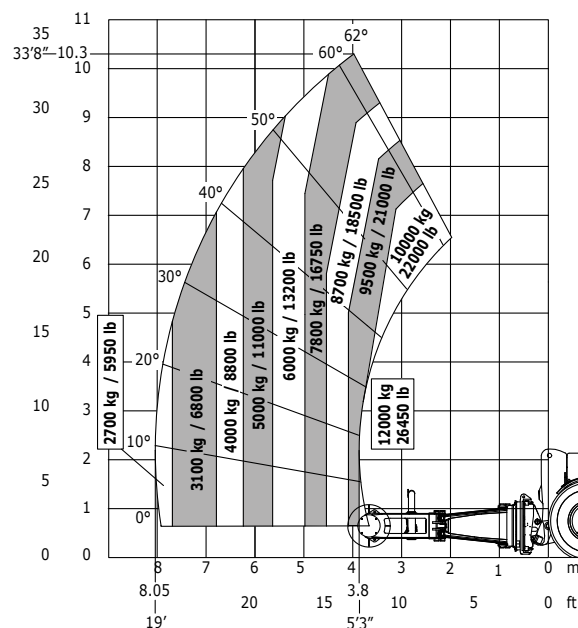
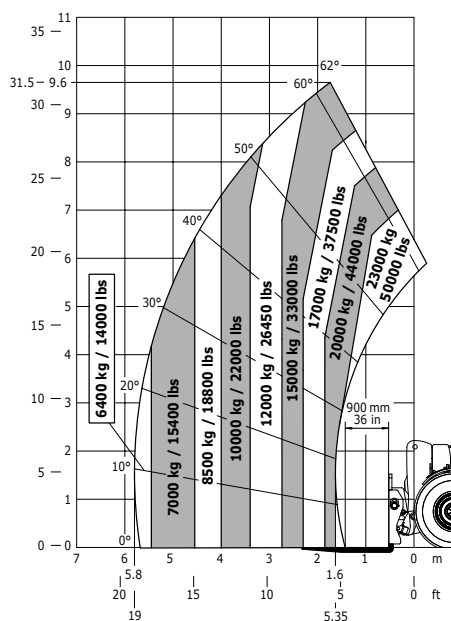
Transmission	-	Hydrostatic
Engine power	Hp (kW)	176 (129)
Engine brand	-	Mercedes
Max. capacity	kg	18000
Max. lifting height	m	9.63
Max. offset	m	5.56
Dimensions without attachments (LxWxH)	m	6.65x2.52x3
Hydraulics	l/min - bar	205 / 350
Tare weight with fork hooks	kg	24000
Max. speed	km/h	25



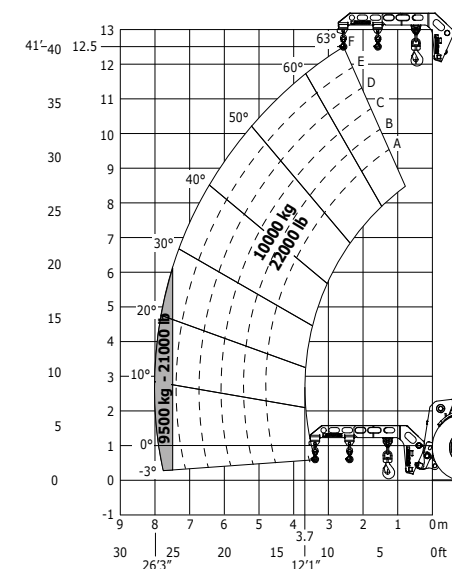
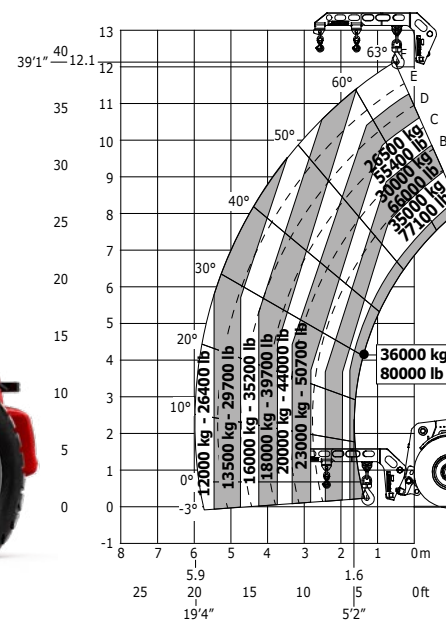
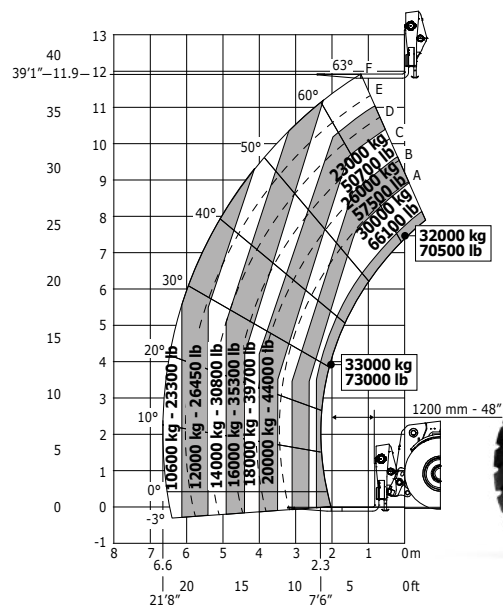
MHT-X 10230 MINING



Transmission	-	Hydrostatic
Engine power	Hp (kW)	176 (129)
Engine brand	-	Mercedes
Max. capacity	kg	23000
Max. lifting height	m	9.63
Max. offset	m	5.8
Dimensions without attachments (LxWxH)	m	6.99x2.85x3.05
Hydraulics	l/min - bar	205 / 350
Tare weight with fork hooks	kg	29300
Max. speed	km/h	25



MHT-12330



Transmission	-	Hydrostatic
Engine power	Hp (kW)	245/180
Engine brand	-	Deutz
Max. capacity	kg	33000
Max. lifting height	m	11.90
Max. offset	m	6.70
Dimensions without attachments (LxWxH)	m	8.45x2.99x3.60
Hydraulics	l/min - bar	210/ 350 Bars
Tare weight with fork hooks	kg	48400
Max. speed	km/h	25





MANITOU IS HERE TO HELP

To enable you to benefit from a mining solution all year long, Manitou offers a wide range of products and services that are suited to all your needs.



Expertise and service on a daily basis

Your Manitou dealer guarantees a complete range of services at all stages of your machine's life and is there to provide support and meet your needs, always looking to provide you with the best solution.



1,500 dealers at your service

The Manitou network operates in more than 140 countries. In total, we employ more than 2,000 expert technicians, specially trained in Manitou technology, who are at your service to assist with everything from purchasing to after-sales.



- **Dealership network**
A network of experts at your service, whatever your field (agriculture, construction, industry).
- **Maintenance contracts**
We offer three levels of contract to meet with your needs: Initial, Advanced and Excellence. Rest easy and leave the maintenance to your official Manitou dealer.
- **Financing**
To hire or to purchase? Whatever your business, simplify your investment with Manitou Finance financing or leasing solutions.
- **Warranty extension**
With Maniplus, you can extend the cover of your Manitou warranty for up to 5 years. Use your equipment with peace of mind.
- **The connected solution**
Easy Manager is a simple and flexible tool for managing, optimizing and securing the operational monitoring of your machines.
- **Original spare parts**
With more than 70,000 products available, your Manitou dealer provides expertise and service on a daily basis!

REDUCE

The Manitou Group's vision

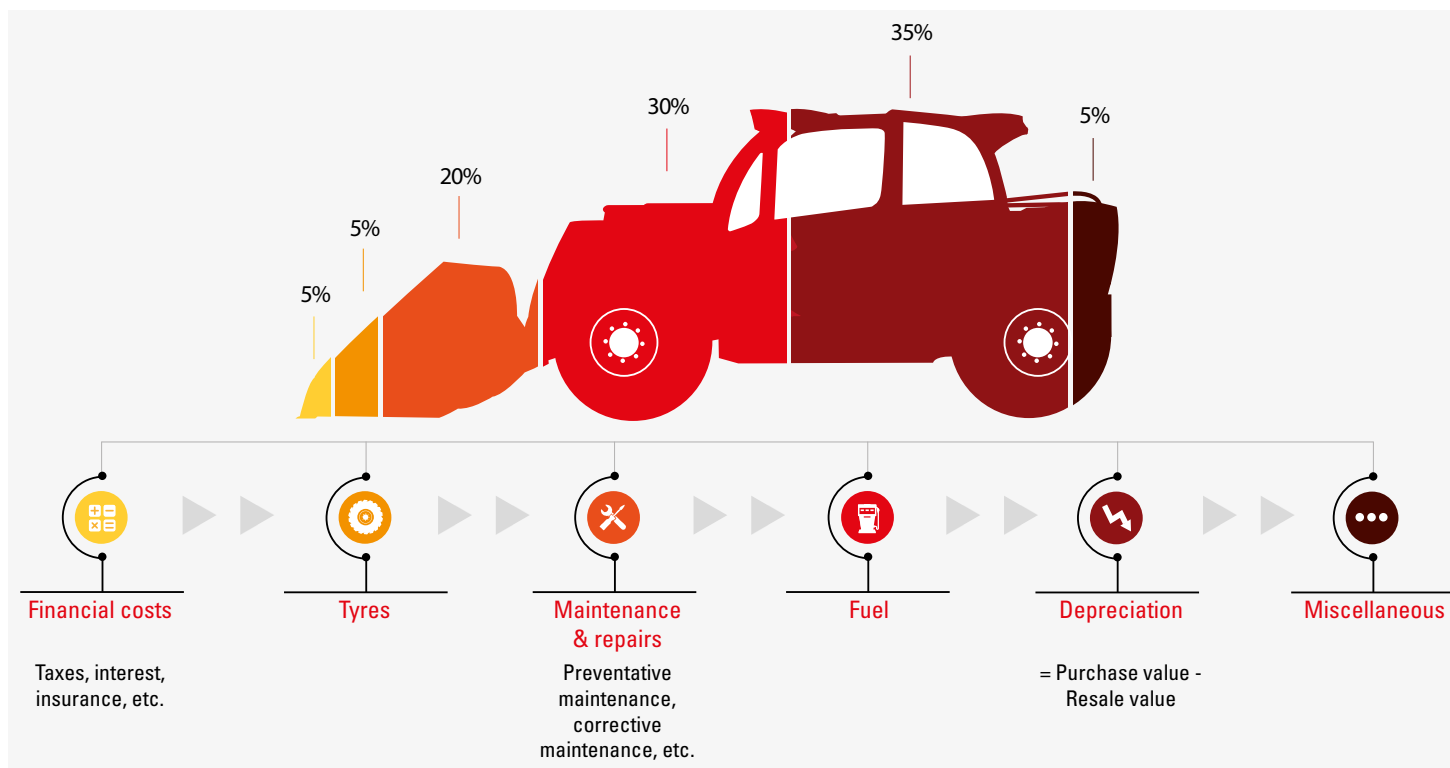
The REDUCE approach aims to improve the work conditions for machine operators in keeping with better productivity and environmental protection. This means transparency regarding fuel consumption data, reducing emissions, raising awareness of total cost of ownership (TCO), and putting a greater emphasis on the health and safety of operators.

Do you know the real cost of ownership of your equipment?

REDUCE TCO (Total Cost of Ownership) gives you detailed information about the breakdown of cost items for your machine and helps you to optimise the profitability of your production tool.



Calculate your TCO at
tco.manitou.com



What does TCO stand for?

The TCO is the total cost of ownership of an asset, more commonly known as the user cost. This indicator takes into consideration fixed costs (such as acquisition, interest, rent and residual value) and also variable costs linked to the use of your machine (such as maintenance and operator training).



OUR PRIORITY: HEALTH AND SAFETY

Because our equipment, by its very nature, provides security, it is our mission to transform usage in certain territories to improve working conditions. Moreover, ensuring the optimum safety of all of our users involves a commitment at every level: from our component and attachment qualification tests to delivery of a global prevention campaign.



Safety
of personnel

To increase versatility and improve safety and working conditions for drivers, discover our wide range of equipment and special solutions.



Safety
of property

To protect your operations and increase productivity, discover our technologies, our services and our wide range of attachments



Our safety
processes

To guarantee a reliable and secure handling solution: our machine tests and a unique "Machine-Attachment" pairing procedure



Prevention
campaign

To guide you towards best practices in the use of your equipment: getting started tools for our products and education pack

Your Manitou dealer:



Head office

B.P. 10249 - 430 rue de l'Aubinière - 44158 Ancenis Cedex - France

Tel.: 00 33 (0)2 40 09 10 11 - Fax: 00 33 (0)2 40 09 10 97

mining@manitou-group.com



This publication provides the description of the versions and configuration possibilities of Manitou products, which may differ in terms of equipment. The equipment presented in this brochure may be available as part of a series, available as an option, or not available, depending on the versions. Manitou reserves the right, at any time and without notice, to amend the specifications described and represented. The specifications provided do not bind the manufacturer. For more details, please contact your Manitou agent. This is not a contractually binding document. The presentation of the products is not contractually binding. The list of specifications is non-exhaustive. The logos and visual identity of the company are the property of Manitou and cannot be used without authorisation. All rights are reserved. The photos and diagrams in this brochure are only provided for consultation and information purposes. Manitou BF SA - Limited company with board of directors - Share capital: 39,547,824 euros - 857 802 508 RCS Nantes